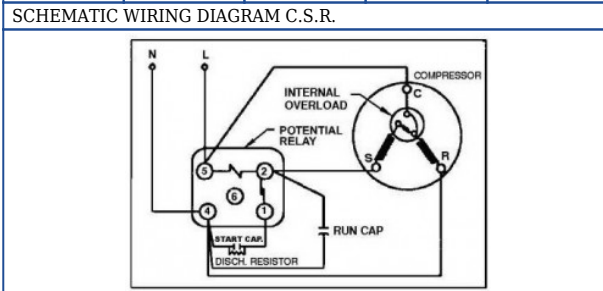


A: 289 B: 223 C: 191 D: 191 E: 239

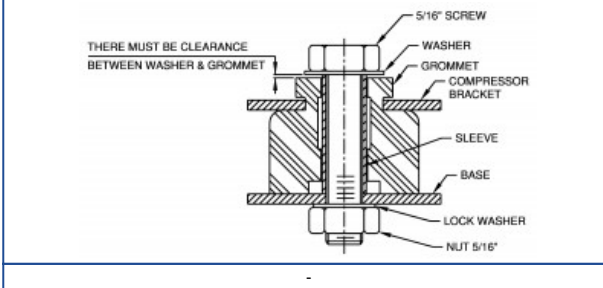


SCHMATIC WIRING DIAGRAM -

-

SCHMATIC WIRING DIAGRAM -

-



Electrical : 220-240 V/ 50 Hz., - V/ - Hz. 1 Phase -/- HP

Nominal Performance	
Capacity	1,244 / - Watts 4,245 / - BTU/Hr 1,070 / - Kcal/Hr
Power Input	929 / - Watts
Locked Rotor Amps	32.00 / - Amps
Max Continuous Current	- / - Amps
Rated Load Amps	4.42 / - Amps
COP	1.34 / - Watts / Watts
EER	4.57 / - BTU/W-Hr

Testing Conditions	
Condensing Temperature	54.40 °C 129.92 °F
Evaporating Temperature	-23.30 / - °C -9.94 / - °F
Liquid Temperature	32.20 °C 89.96 °F
Return Gas Temperature	32.20 °C 89.96 °F
Ambient Temperature	32.20 °C 89.96 °F

Application	
Evaporating Temp. Range	LBP @ -40.00 °C to -12.20 °C (-40.00 F to 10.04 °F)
	Heat Pump - to - (- to -)
Refrigerant	R404A
Refrigerant Flow Control	Capillary Tube
Compressor Cooling	Fan

Compressor and Motor data	
Compressor Type	Reciprocating
Displacement	37.5 cc.
Oil Type	Polyolester Oil
Oil Charge	1,067 cc.
Motor Type	C.S.R. ;2 Pole 2,850 / - r/m
Voltage Range	198-264/- Volts 50/- Hz.
Winding Resistance at 25 ° C	
Start	5.61 Ohms
Run	1.94 Ohms
Weight with Oil	24.23 Kg.
Weight with Oil and Accessories	25.03 Kg.

Electrical Components	
Motor Protector	Internal Overload
Type	Internal Overload
Model Number	4042KGE656-6
Open / Close	105-115 / 80-58 ° C
1st Cycle trip at 25 ° C	37.00 Amps(main) 24.00 Amps(start)
Motor Starter	
Type	Potential Relay
Model Number	4043KME692-1 (RVA8R6D)
Pick Up (max.)	323-352 Volts
Drop Out (min.)	75-180 Volts
Terminal Cover	4040KGM901-2
Start Capacitor	108-130 µF 330 VAC.
Disch Resistor for Start Cap	15000 Ohms 2 W
Run Capacitor	20 µF 440/450 VAC.

Mounting Kit	
Rubber Grommet	4007KGM905-2
Sleeve Grommet	4023KGM903-2
Washer	-

Since we are constantly improving our product , the specification are subject to change without notice.

REV. DATE 22-01-2026 C / N No. 0007/26

Certificate Marks

