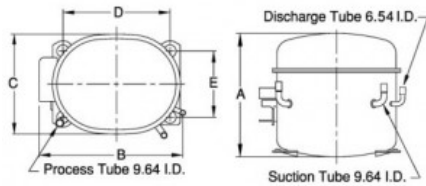


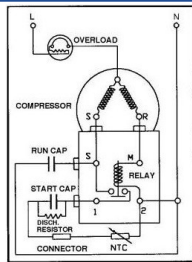


**PRINCIPAL DIMENSIONS - MM**



A: 217    B: 239    C: 115    D: 165    E: 102

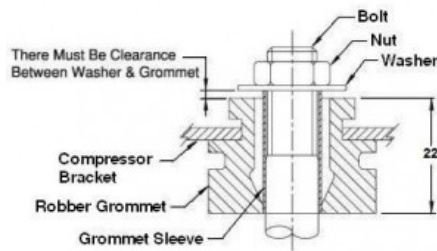
**SCHEMATIC WIRING DIAGRAM C.S.R.**



**SCHEMATIC WIRING DIAGRAM -**

-

**MOUNTING KIT**



Electrical : 208-230 V/ 60 Hz., - V/ - Hz. 1 Phase -/- HP

**Nominal Performance**

Capacity	1,005 / 1,950 Watts
	3,429 / 6,653 BTU/Hr
	864 / 1,677 Kcal/Hr
Power Input	635 / 870 Watts
Locked Rotor Amps	16.70 / 16.70 Amps
Max Continuous Current	- / - Amps
Rated Load Amps	3.04 / 4.15 Amps
COP	1.58 / 2.24 Watts / Watts
EER	5.40 / 7.65 BTU/W-Hr

**Testing Conditions**

Condensing Temperature	54.40 °C	129.92 °F
Evaporating Temperature	-6.70 °C / 7.20 °C	19.94 °F / 44.96 °F
Liquid Temperature	46.10 °C	114.98 °F
Return Gas Temperature	35.00 °C	95.00 °F
Ambient Temperature	35.00 °C	95.00 °F

**Application**

Evaporating Temp. Range	MBP/HBP	@ -23.30 °C to 12.70 °C (-9.94 F to 54.86 °F)
	Heat Pump	- to - (- to -)
Refrigerant	R134a	
Refrigerant Flow Control	Capillary Tube	
Compressor Cooling	Fan (460 CFM)	

**Compressor and Motor data**

Compressor Type	Reciprocating
Displacement	18 cc.
Oil Type	Polyolester Oil
Oil Charge	457 cc.
Motor Type	C.S.R. ;2 Pole 3,500 / - r/m
Voltage Range	187-264/- Volts 60/- Hz.
Winding Resistance at 25 °C	
Start	7.75 Ohms
Run	3.10 Ohms
Weight with Oil	12.08 Kg.
Weight with Oil and Accessories	12.73 Kg.

**Electrical Components**

<b>Motor Protector</b>	
Type	External 3/4"
Model Number	KME664-5/C
Open / Close	100-110 / 78-60 ° C
1st Cycle trip at 25 ° C	15.10 Amps(main) - Amps(start)
<b>Motor Starter</b>	
Type	Current Relay
Model Number	KME682-23NT
Pick Up (max.)	10.30 Amps
Drop Out (min.)	9.60 Amps
Terminal Cover	4040KMD901-12
Start Capacitor	36-43 µF 330 VAC.
Disch Resistor for Start Cap	15000 Ohms 2 W
Run Capacitor	10 µF 440 VAC.

**Mounting Kit**

Rubber Grommet	4007KMD905-3
Sleeve Grommet	3KMD903-2-Z
Washer	4023KEB387

Since we are constantly improving our product , the specification are subject to change without notice.

REV. DATE 11-03-2016    C / N No. 0077/16

**Certificate Marks**



**RoHS**